

**IMPORTANT NOTICE:**  
 CAD/DWG FILES ARE FOR FURNITURE LAYOUT PURPOSES ONLY. DO NOT  
 CHANGE OR ALTER THE FLOOR PLAN IN ANY WAY. ANY REQUESTED  
 CHANGES OR ALTERATIONS TO THE FLOOR PLAN MUST BE SUBMITTED  
 ON A MARKED UP HARD COPY FOR THE MOST CURRENT FLOOR PLAN.

FULL HEIGHT END  
 WALL, FROM FLOOR  
 DECK TO ROOF DECK

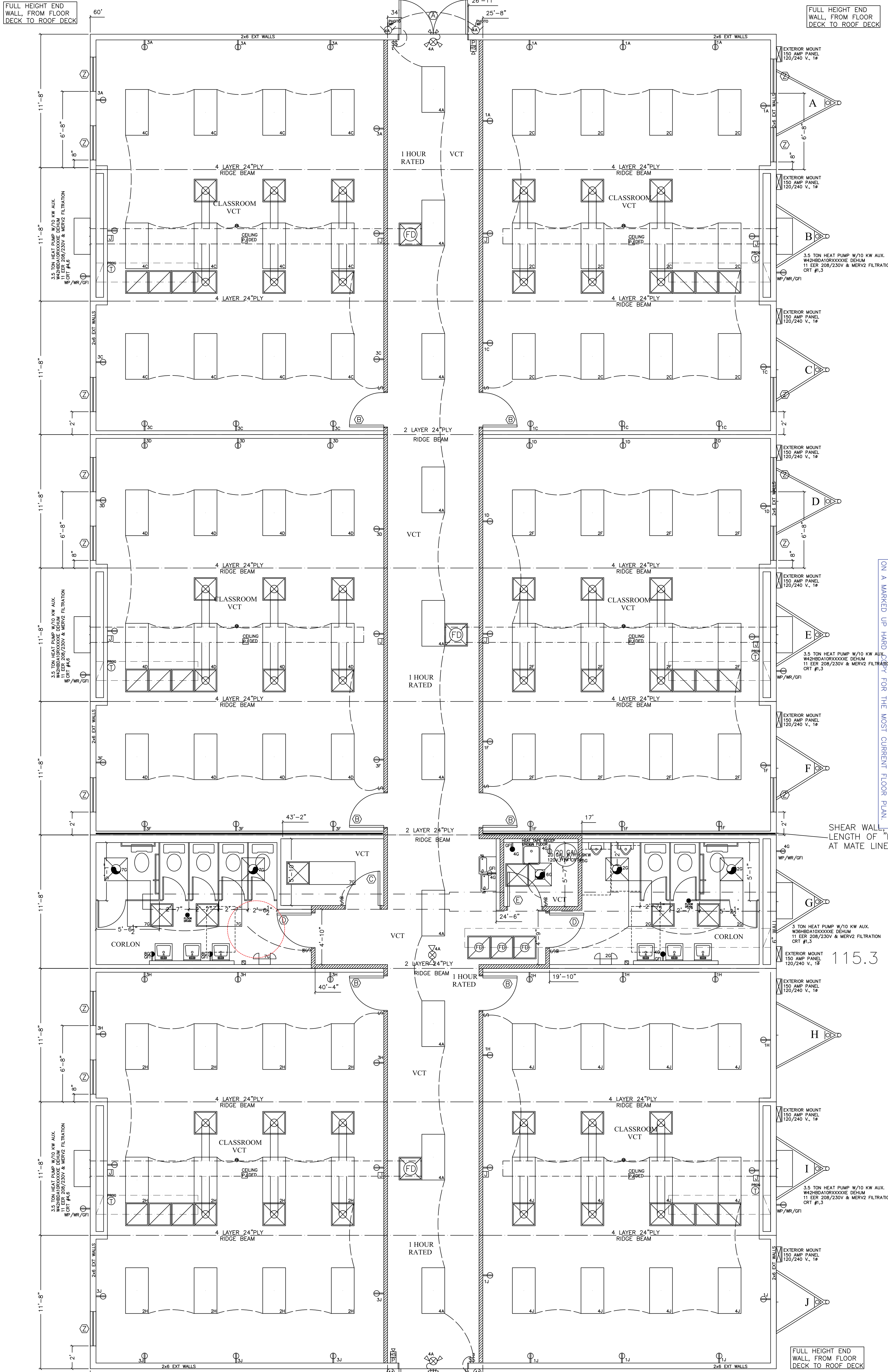
FULL HEIGHT END  
 WALL, FROM FLOOR  
 DECK TO ROOF DECK

**IMPORTANT NOTICE:**  
 CAD/DWG FILES ARE FOR FURNITURE LAYOUT PURPOSES ONLY. DO NOT  
 CHANGE OR ALTER THE FLOOR PLAN IN ANY WAY. ANY REQUESTED  
 CHANGES OR ALTERATIONS TO THE FLOOR PLAN MUST BE SUBMITTED  
 ON A MARKED UP HARD COPY FOR THE MOST CURRENT FLOOR PLAN.

**IMPORTANT NOTICE:**  
 CAD/DWG FILES ARE FOR FURNITURE LAYOUT PURPOSES ONLY. DO NOT  
 CHANGE OR ALTER THE FLOOR PLAN IN ANY WAY. ANY REQUESTED  
 CHANGES OR ALTERATIONS TO THE FLOOR PLAN MUST BE SUBMITTED  
 ON A MARKED UP HARD COPY FOR THE MOST CURRENT FLOOR PLAN.

FULL HEIGHT END  
 WALL, FROM FLOOR  
 DECK TO ROOF DECK

FULL HEIGHT END  
 WALL, FROM FLOOR  
 DECK TO ROOF DECK



**CUSTOMER APPROVAL**  
 DATE: \_\_\_\_\_  
 SIGNATURE: \_\_\_\_\_

DOOR SCHEDULE		WINDOW SCHEDULE	
(A)	7280 - STEEL DOOR w/6'-0\"/>	(Z)	36W x 60H VERTICAL SLIDER DP 50
(B)	5505 - 2\"/>	(1)	36W x 60H VERTICAL SLIDER DP 50
(C)	5650 - SOLID CORE - FLAT PANEL DOOR	(2)	36W x 60H VERTICAL SLIDER DP 50
(D)	5650 - SOLID CORE - FLAT PANEL DOOR	(3)	36W x 60H VERTICAL SLIDER DP 50
(E)	5650 - SOLID CORE - FLAT PANEL DOOR	(4)	36W x 60H VERTICAL SLIDER DP 50

PUBLISH DATE	CHANGE ORDER #	DATE
---	---	---

**TITAN MODULAR SYSTEMS, INC.**  
 162 INDUSTRIAL DRIVE  
 ALMA, GA 31510  
 912-532-3344 (PH)  
 912-532-3345 (FX)

CONTRACTOR SPECIFICATIONS:  
 WIND SPEED 140 MPH  
 SNOW LOAD 40  
 TRUSS END TRANSVERSE 24\"/>

REVISION/DATE	BY	DATE
1: 7/13/2021	---	---
2: 7/13/2021	---	---
3: 7/13/2021	---	---

DATE: 6/15/2021  
 DRAWN BY: AMY JOHNSON  
 CHECKED BY: WILLIAM CULLER

SCALE: 3/16\"/>

TOTAL ELECTRIC LOAD  
 AS CURRENTLY SHOWN  
 856.5 AMP

**IMPORTANT NOTICE:**  
 CAD/DWG FILES ARE FOR FURNITURE LAYOUT PURPOSES ONLY. DO NOT  
 CHANGE OR ALTER THE FLOOR PLAN IN ANY WAY. ANY REQUESTED  
 CHANGES OR ALTERATIONS TO THE FLOOR PLAN MUST BE SUBMITTED  
 ON A MARKED UP HARD COPY FOR THE MOST CURRENT FLOOR PLAN.